

Operating temperature

-20 °C to +70 °C

Working pressure

-0.98 bar to 16 bar

Medium:

Compressed air

Thread

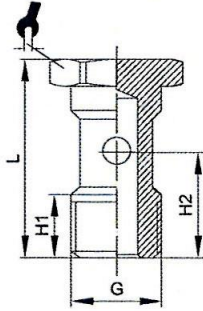
G-Thread acc. to DIN EN ISO 228-1

Recommended hose

PA and PU

Applications:

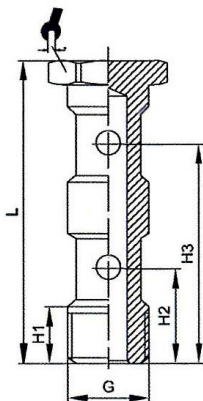
Compressed air systems, vacuum



762.018

Banjo bolt, single

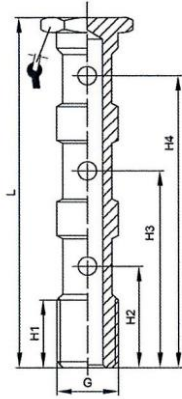
Art. No.	Type No.	G mm	H1 mm	H2 mm	L mm	a/f mm
108822	762.005	M5	6.0	9.6	17.5	8
108823	762.018	G 1/8	9.0	15.0	28.0	14
108824	762.014	G 1/4	12.0	18.0	33.0	17
108825	762.038	G 3/8	13.0	21.0	36.0	19



763.018

Banjo bolt, double

Art. No.	Type No.	G mm	H1 mm	H2 mm	H3 mm	L mm	a/f mm
108826	763.018	G 1/8	9.0	15.0	31.0	44.5	14
108827	763.014	G 1/4	11.0	17.0	36.0	51.5	17
108828	763.038	G 3/8	14.0	20.5	43.0	58.1	19



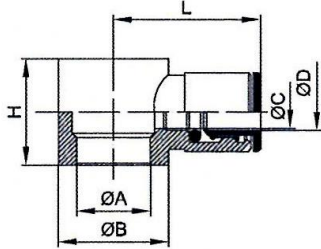
764.018

Banjo bolt, triple

Art. No.	Type No.	G mm	H1 mm	H2 mm	H3 mm	H4 mm	L mm	a/f mm
108829	764.018	G 1/8	9.0	16.0	32.5	48.0	60.0	14
108830	764.014	G 1/4	12.0	18.5	37.0	55.5	70.5	17
108831	764.038	G 3/8	13.0	20.5	44.0	65.0	80.0	19

Sealant:

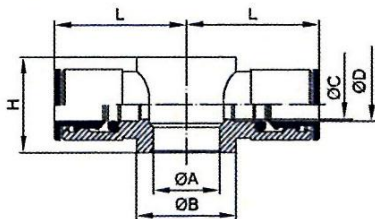
NBR



765.018-4

L-ring nipple

Art. No.	Type No.	ØD mm	G mm	ØA mm	ØB mm	ØC mm	H mm	L mm	Sleeve
108832	765.005-4	4	M5	5.0	a/f 9	3.0	9.0	18.0	POM black
108833	765.018-4	4	G 1/8	9.9	14.0	3.0	15.0	20.5	POM black
108834	765.018-6	6	G 1/8	9.9	14.0	5.0	15.0	23.0	POM black
108835	765.018-8	8	G 1/8	9.9	14.0	6.0	15.0	24.5	POM black
108836	765.014-6	6	G 1/4	13.3	18.0	5.0	17.0	24.0	POM black
108837	765.014-8	8	G 1/4	13.3	18.0	7.0	17.0	26.0	POM black
108838	765.014-10	10	G 1/4	13.3	18.0	9.0	17.0	27.0	Black nickel-plated brass
108839	765.014-12	12	G 1/4	13.3	18.0	9.0	17.0	28.0	Black nickel-plated brass
108840	765.038-8	8	G 3/8	16.6	21.0	7.0	20.0	27.0	POM black
108841	765.038-10	10	G 3/8	16.6	21.0	9.0	20.0	28.0	Black nickel-plated brass
108842	765.038-12	12	G 3/8	16.6	21.0	11.0	20.0	29.0	Black nickel-plated brass



766.018-4

T-ring nipple

Art. No.	Type No.	ØD mm	G mm	ØA mm	ØB mm	ØC mm	H mm	L mm	Sleeve
108843	766.005-4	4	M5	5.0	7.0	3.0	9.0	18.0	POM black
108844	766.018-4	4	G 1/8	9.9	14.0	3.0	15.0	21.0	POM black
108845	766.018-6	6	G 1/8	9.9	14.0	5.0	15.0	23.0	POM black
108846	766.018-8	8	G 1/8	9.9	14.0	6.0	15.0	24.5	POM black
108847	766.014-6	6	G 1/4	13.3	18.0	5.0	17.0	24.0	POM black
108848	766.014-8	8	G 1/4	13.3	18.0	7.0	17.0	26.0	POM black
108849	766.014-10	10	G 1/4	13.3	18.0	9.0	17.0	26.0	Black nickel-plated brass
108850	766.038-8	8	G 3/8	16.7	21.0	7.0	20.0	27.0	POM black
108851	766.038-10	10	G 3/8	16.7	21.0	9.0	20.0	28.0	Black nickel-plated brass
108852	766.038-12	12	G 3/8	16.7	21.0	11.0	20.0	29.0	Black nickel-plated brass